



NYPD

SCHOOL SAFETY DIVISION

COMMUNITY OUTREACH UNIT

LARCENY PREVENTION TIPS



LARCENY IS A CRIME

LARCENY OCCURS WHEN A PERSON TAKES, OBTAINS OR WITHHOLDS PROPERTY FROM ITS' OWNER

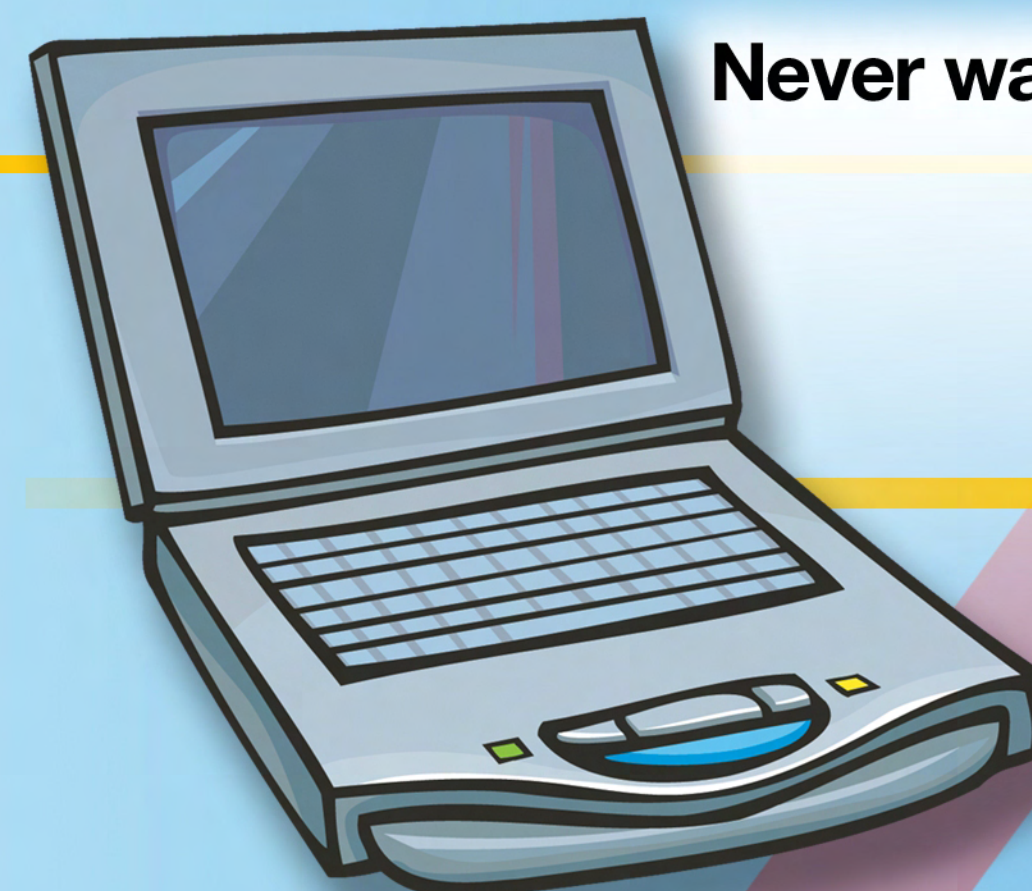
GRAND LARCENY

OCCURS WHEN:

- PROPERTY STOLEN IS VALUED AT \$1000 OR MORE
- PROPERTY IS REMOVED FROM A PERSON
- GRAND LARCENY IS A FELONY PUNISHABLE UP TO MORE THAN A YEAR IN PRISON

REMEMBER

- SECURE ALL PERSONAL PROPERTY
- SECURE ALL WORK RELATED PROPERTY
- WRITE IDENTIFYING MARKS ON PROPERTY
- KEEP SERIAL NUMBERS TO PROPERTY IN A SAFE PLACE



Never walk away from your laptop.



Never leave your purse, briefcase, backpack on desk, behind chair or unattended.



Secure your keys, never leave them on desk, in keyholes, or unattended, allowing someone access to property.



Never leave your cell phone in your coat pocket, or desk. Secure on your person.



Keep expensive jewelry concealed.



Never display large amounts of cash.

KEEP AN EYE ON YOUR PROPERTY, IF YOU DON'T, SOMEONE ELSE WILL!